





# CERTIFICATION AND SURVEILLANCE PROCEDURE

## 1.0 OBJECT

1.1 This is to define the process of certification and supervision services provided by Kiwa..

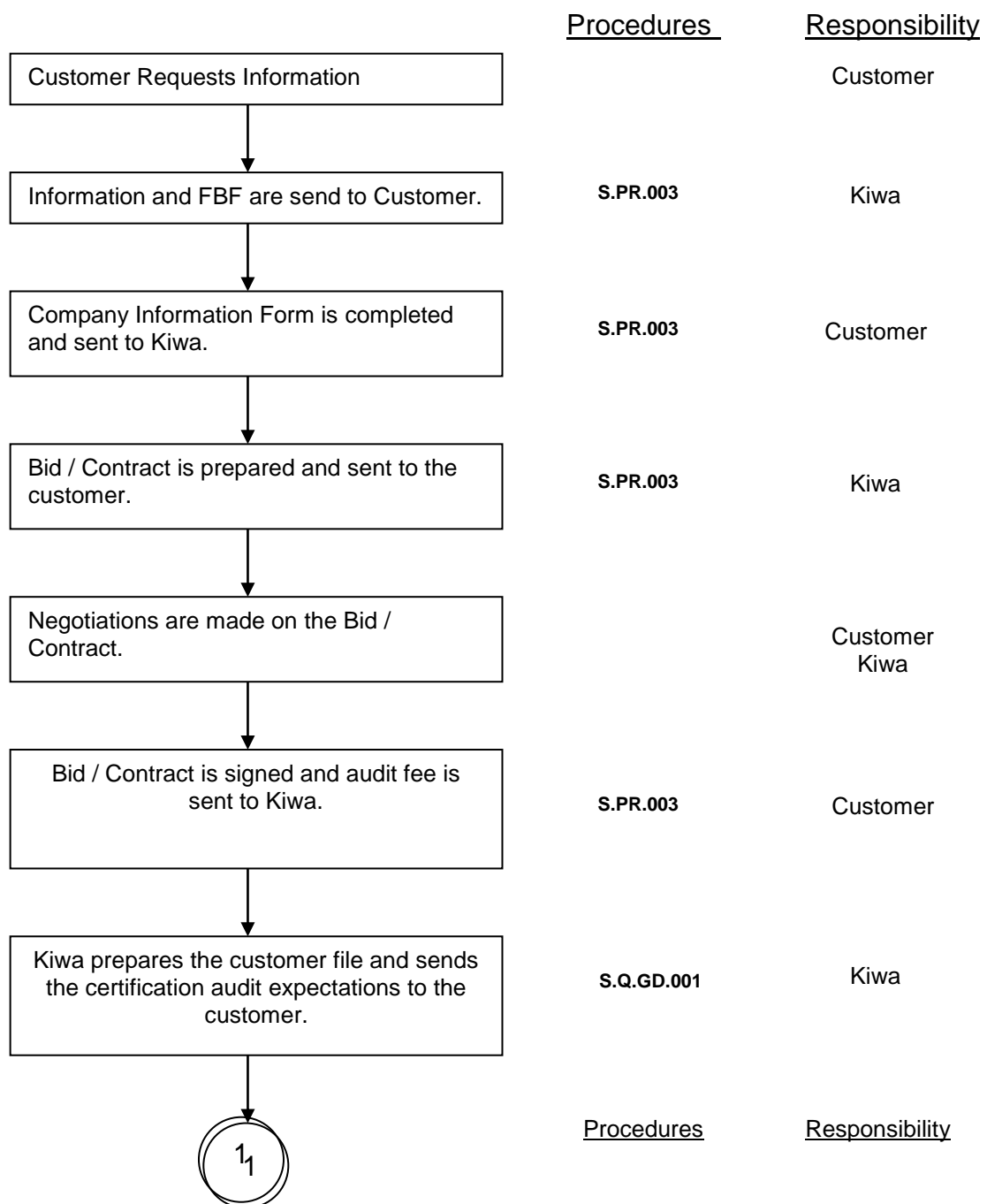
## 2.0 SCOPE

2.1 This procedure applies to Kiwa's certification and surveillance services to its customers.

## 3.0 RESPONSIBILITIES

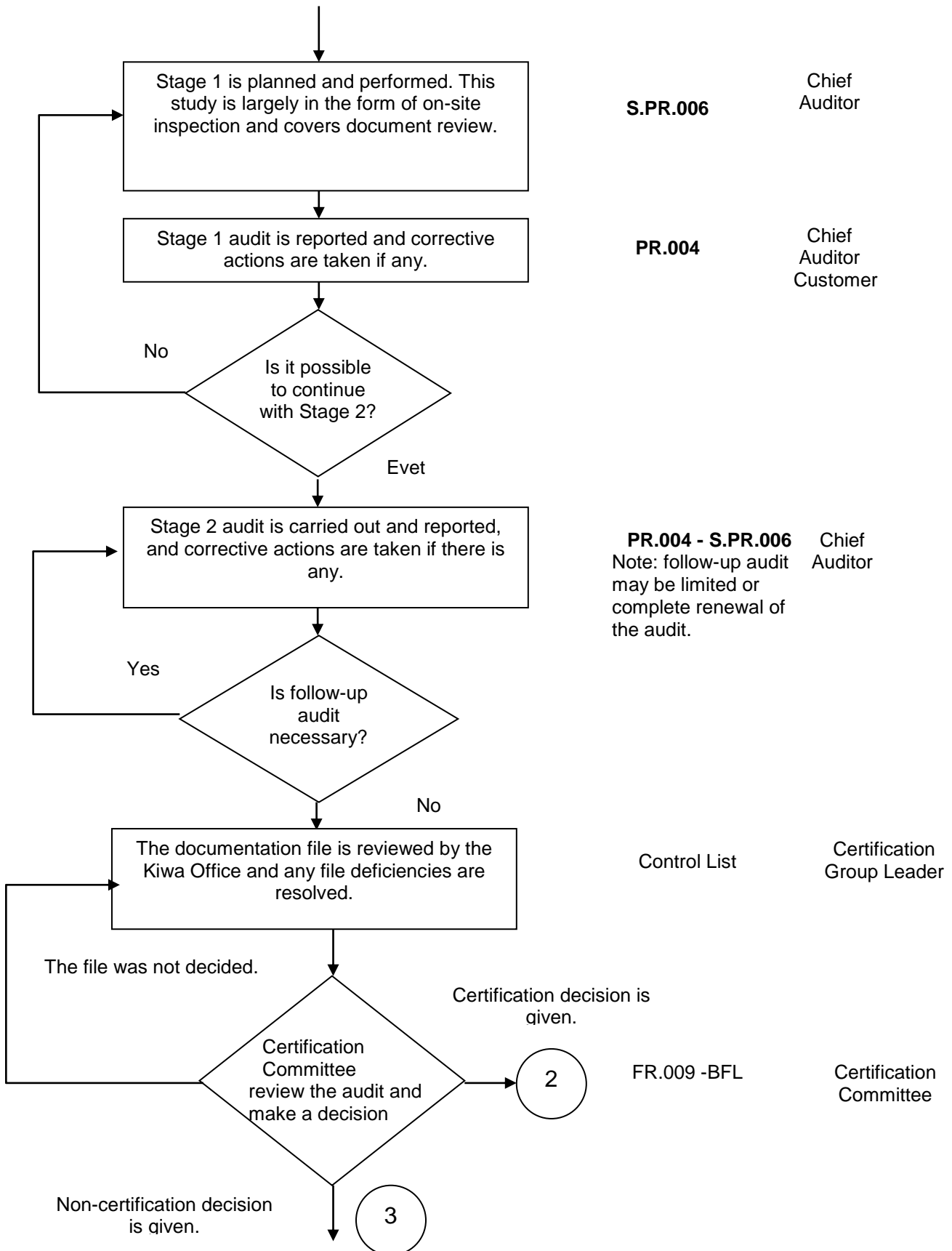
All responsibilities are set out in the Application Flow Chart.

## 4.0 APPLICATION





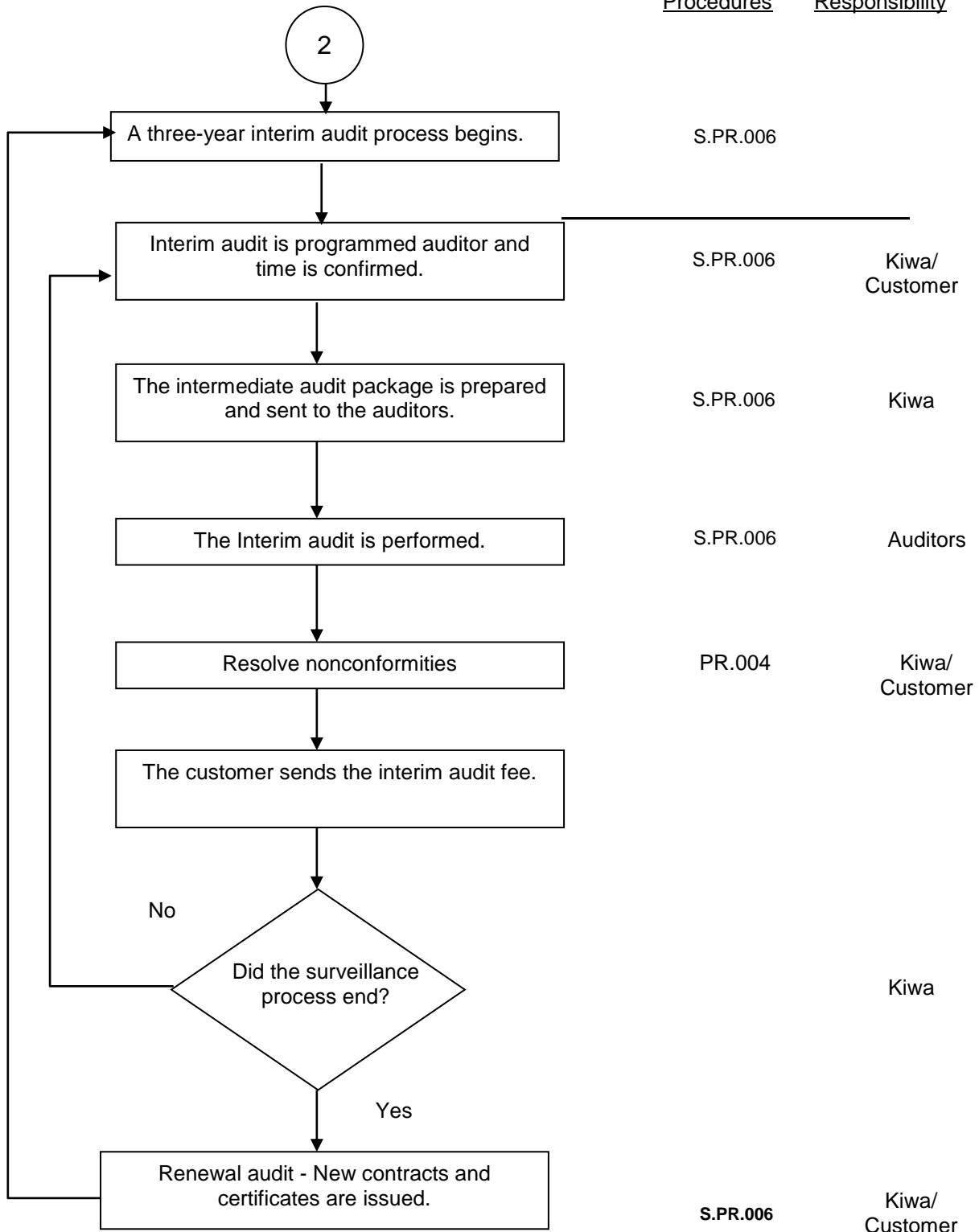
# CERTIFICATION AND SURVEILLANCE PROCEDURE





# CERTIFICATION AND SURVEILLANCE PROCEDURE

Procedures      Responsibility

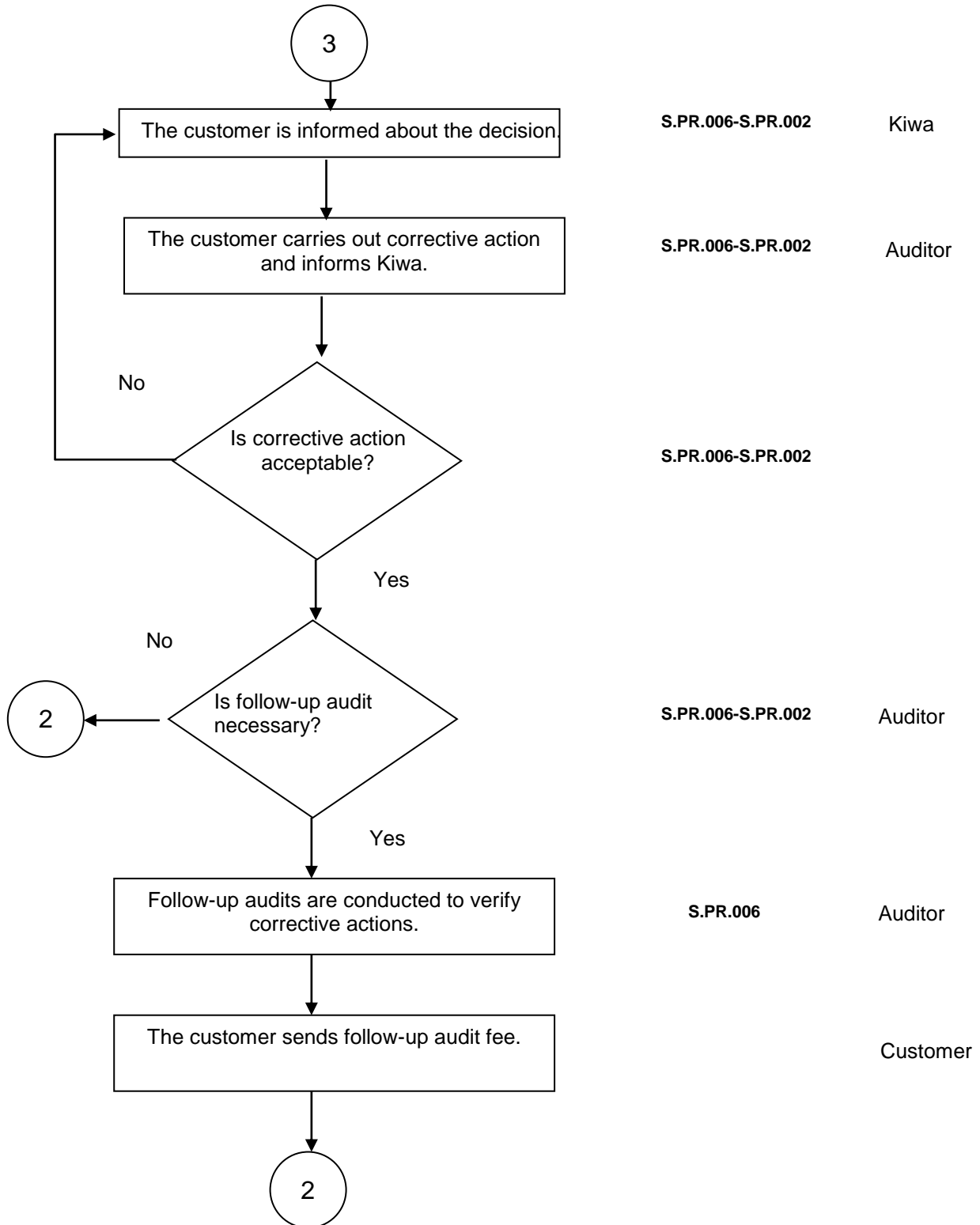




# CERTIFICATION AND SURVEILLANCE PROCEDURE

Procedures

Responsibility





# CERTIFICATION AND SURVEILLANCE PROCEDURE

## 5.0 RECORDS

---

5.1 FR.009 Recommendation Report

## 6.0 REFERENCES

---

<i>Standard No</i>	<i>Standard Name</i>	<i>Article No / Name</i>
TS EN ISO/IEC 17021	Conformity Assessment - Conditions for Organizations Providing the Inspection and Certification of Management Systems	8.2 Certification documents
		8.6 Exchange of information between the Certification Body and its customers
		9.2 Initial audit and certification