

# Assessment and advice for industrial gas installations

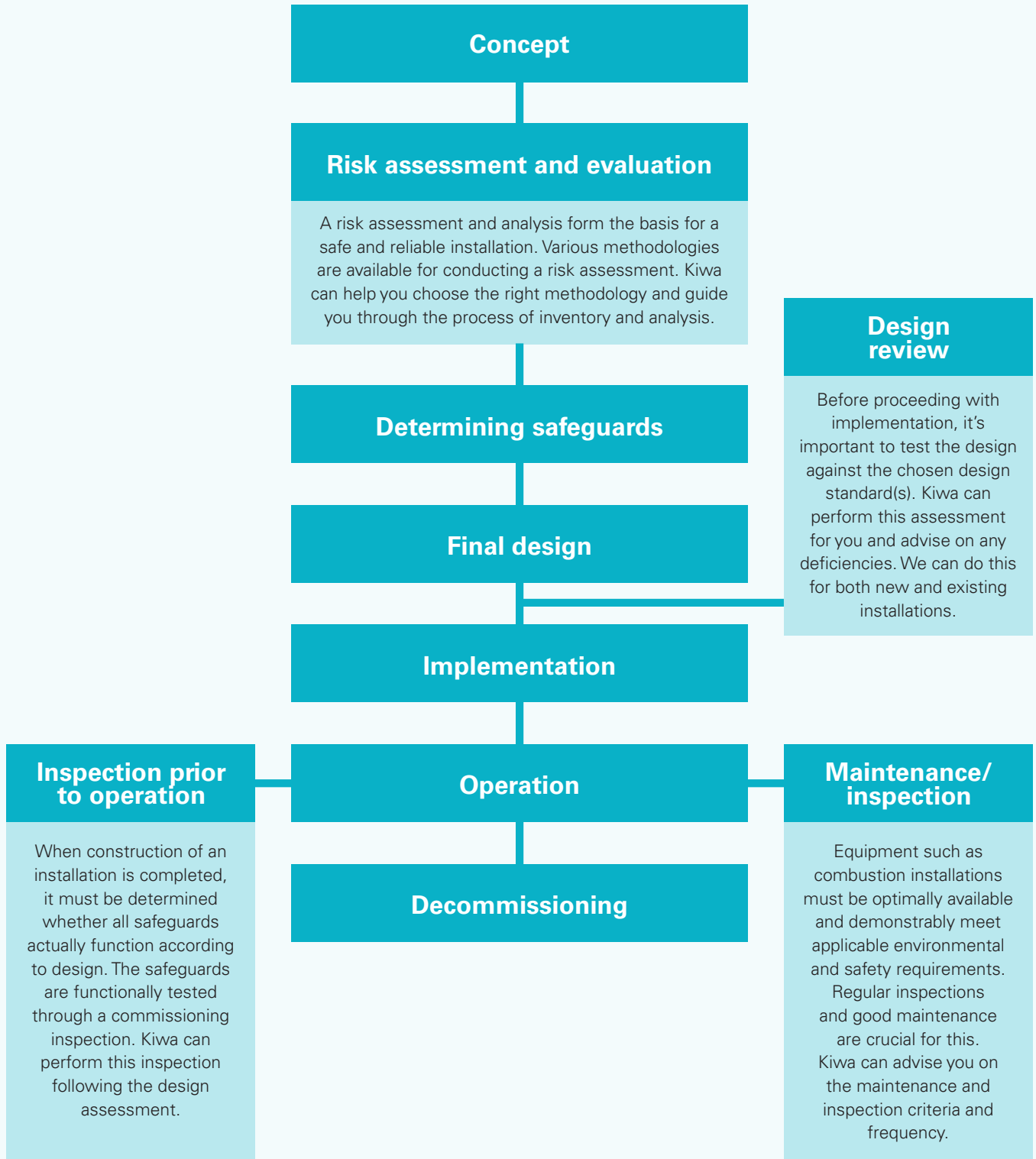


**Partner  
for  
Progress**

### Safe and efficient operation of industrial gas installations

Gas installations used in industrial processes must demonstrably meet numerous functional, environmental and safety requirements. Because of the complexity of these installations, knowledge of (inter)national regulations, gas and inspection technology, safety, safety philosophy and ATEX is necessary. Kiwa provides all these disciplines in-house and can advise you on the safe and efficient use of industrial gas installations.

Kiwa's assessment and advisory services for industrial gas installations cover all life phases of the system and range from risk assessment during design to performing a quick scan or determining the remaining service life of an existing installation.



**We can provide you with answers to the following questions:**

- What regulations must my installation comply with?
- Is my installation designed to be efficient and safe?
- Does my installation function efficiently and safely?
- What inspection and maintenance activities need to be carried out on my installation?

**What else can we help you with?**

- Investigation into the cause of malfunctions and incidents
- Quickscan
- Design advice
- Second opinion
- Determining maintenance and inspection criteria and frequency

**We are also happy to assist you with advice on:**

- The design of industrial combustion installations
- The appropriate safety philosophy
- Risk assessment and evaluation

**In addition, we can assist you with questions regarding:**

- The practical execution of inspections on installations
- The cause of malfunctions and damages
- Laws and regulations
- Performing inspections on combustion installations
- Execution of and advice on ATEX zoning
- Advice on the appropriate inspection frequency for industrial installations
- Advice on the optimization of combustion installations
- Customer-specific training

**Why Kiwa?**

Kiwa specializes in the efficiency and safety of gas combustion installations. It is no coincidence that current regulations in the field of industrial gas installations have been partly established through the commitment and expertise of our experts. When it comes to the safety of gas installations, we are involved in, among other things:

- Support in the establishment of regulations in national and international norm committees
- Advice on the application and interpretation of regulations
- Investigation into the cause of incidents.

In short, Kiwa can answer all your questions about gas installations. We act as a sparring partner or support you with advice, research or training. Our services are impartial, independent and solution-oriented.

**Want to know more?**

Contact us at +31 (0)88 998 35 21 or [technology@kiwa.com](mailto:technology@kiwa.com).



© 2023 Kiwa N.V.

All rights reserved. No part of this publication may be reproduced, stored in an automated database, or made public in any form or by any means, whether electronic, mechanical, photocopying, recording or otherwise, without prior written permission from the publisher.

**Kiwa Technology B.V.**

Wilmersdorf 50  
Postbus 137  
7300 AC Apeldoorn  
The Netherlands

**T.** + 31 (0)88 998 35 21  
**E.** [technology@kiwa.com](mailto:technology@kiwa.com)  
**W.** [kiwatechnology.com](http://kiwatechnology.com)

